

LSVH Series

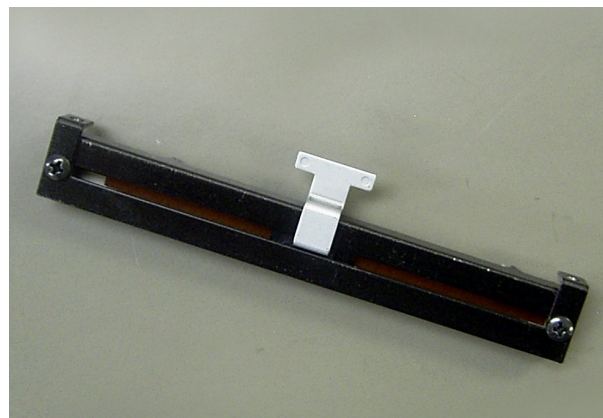
PROFADER™

Direct print resistance board

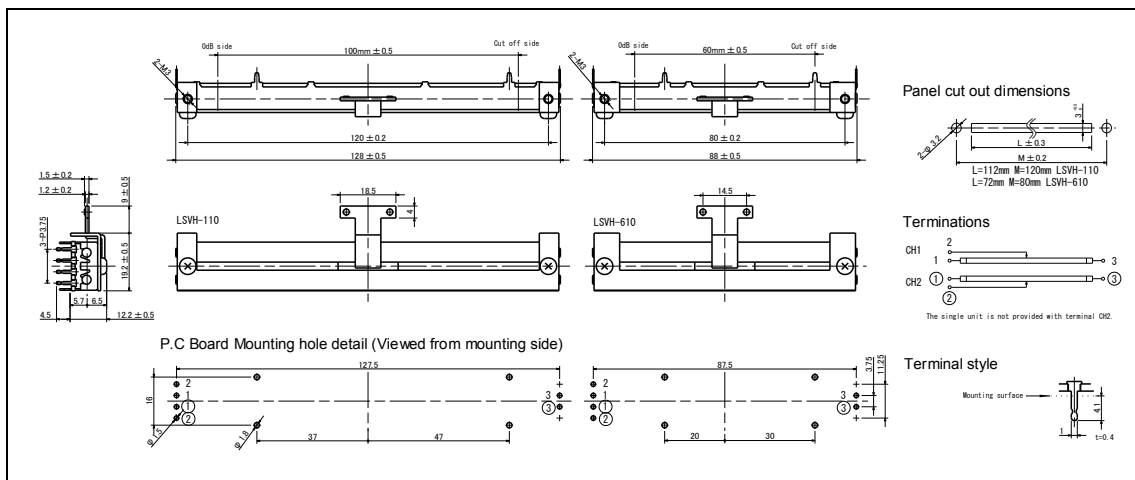
Long sliding life

Protection against dust

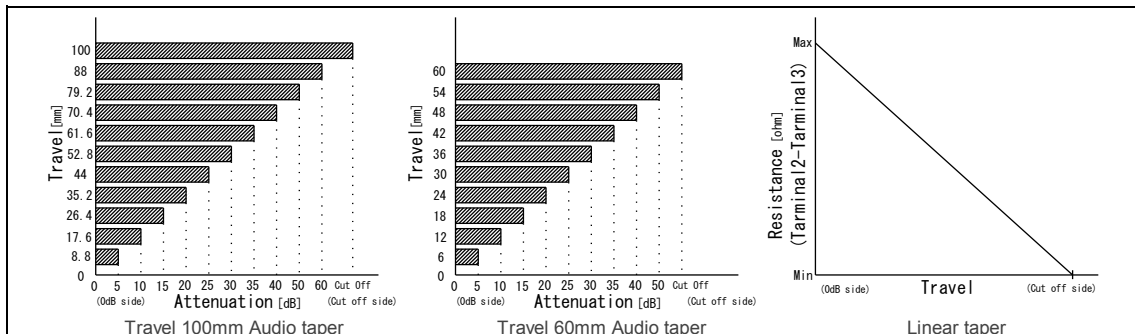
Horizontal style Control-bar design.



Dimensions



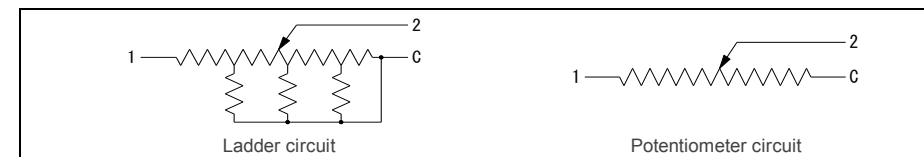
Output Law



Model number

2	LSVH-110	0	- B	10K
Number of circuit Blank: single circuit 2: 2circuits	Product type LSVH-110: 100mm LSVH-610: 60mm	Torque 0: Normal torque 1: High torque	Taper Blank: Audio taper B: Linear taper	Total resistance

Circuit method



Electrical specifications

	LSVH-x10x	2LSVH-x10x	LSVH-x10x-B	2LSVH-x10x-B
Circuit (Unbalanced)	1	2	1	2
Total resistance (1-C)	5k, 10kohm			
Total resistance tolerance	20%			
Taper	Audio (Ladder circuit)		Linear (Potentiometer circuit)	
Linearity	-		±5%	
Residual resistance	-		50ohm or less	
Attenuation accuracy	0~20dB: ±3.0dB		-	
Matching accuracy	-		0~20dB: 3.0dB	
Insertion loss	0.5dB or less		-	
Cut off (15Hz)	95dB Min.		-	
Voltage proof	1 Min. at AC500V			
Insulation resistance	50Mohm or more at DC250V			
Max rating	DC20V			
Sliding noise level	47mV or less (by JIS C 6443)			
Sliding life	100,000 Cycles Min. (18cycles/min. Sliding noise level: Less than 100mV)			

Mechanical specifications

	LSVH-1100 Series	LSVH-6100 Series
Stroke length	100mm±0.5mm	60mm±0.5mm
Operating force	0~0.1N (Normal torque), 0.1~0.3N (High torque)	
Strength of Nut-Attached	100Ncm	
Attached Parts	M3 screw (Length: Panel thickness + 3mm)	
Stopper strength	30N	
Push-pull strength	30N	

General specifications

LSVH Series	
Temp.range	-10 to +70 deg C (Operating), -15 to +75 deg C (Storage)
Relative humidity	90%RH (No condensation)

Note

- * Solder heat resistance: 350deg C max, 5sec max, 2 times. (Manual soldering only)
- * Please take care during soldering that the smoke from the solder does not flow inside a fader.
- * If the flux sticks to a resistor board, it may cause a trouble with the fader.
- * Move to one end in Control-bar on the occasion of knob wearing, and can break into it slowly.